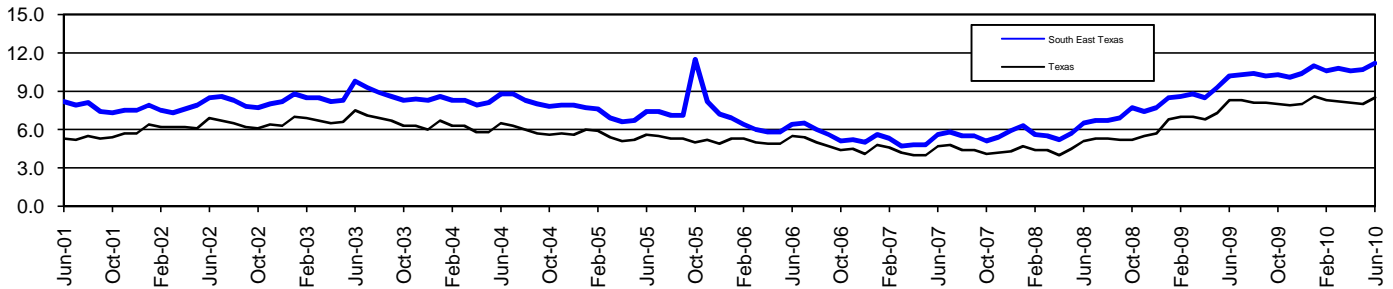


South East Texas Workforce Development Area*

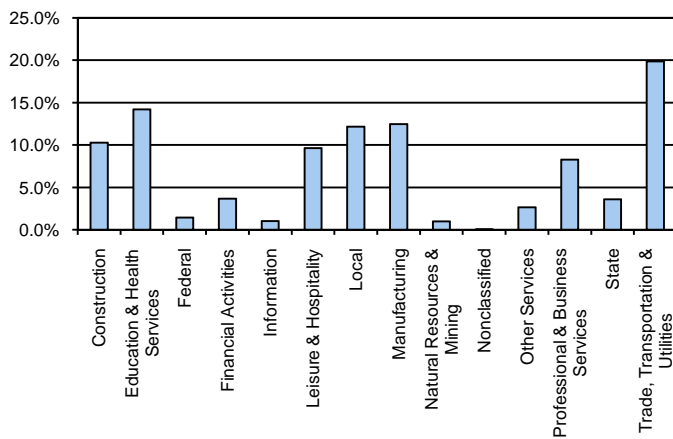
June 2010

South East Texas WDA					Texas				
	CLF	Employed	Unemployed	Rate		CLF	Employed	Unemployed	Rate
Jun-10	186,922	165,988	20,934	11.2	Jun-10	12,176,593	11,136,625	1,039,968	8.5
May-10	186,794	166,793	20,001	10.7	May-10	12,161,678	11,186,860	974,818	8.0
Jun-09	184,791	165,915	18,876	10.2	Jun-09	12,029,113	11,033,309	995,804	8.3

Historical Unemployment Rates



South East Texas WDA Industry Composition 4th Quarter 2009



Total WDA Claims

	Jun-10	May-10	Jun-09	OTY
Initial	2,555	2,365	2,843	-288
Continued	12,223	11,205	16,049	-3,826
Continued Claims for the Week of the 12th				
Continued	705	701	1,301	-596

Texas Unemployment Insurance Claims Filed

	Jun-10	May-10	Jun-09	OTY
Initial	103,018	88,051	120,940	-17,922
Continued	994,447	1,004,012	1,389,112	-394,665
Continued Claims for the Week of the 12th				
Continued	221,742	217,016	313,537	-91,795

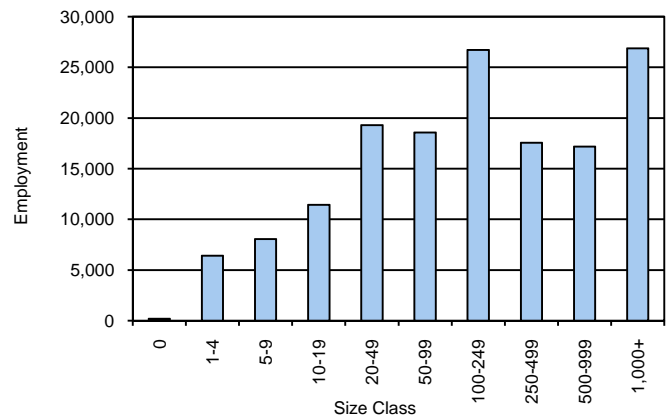
South East Texas WDA Average Weekly Wage

	South East Tx	WDA Qtr. Chg.	Texas
4th Quarter 2009	\$887.46	\$76.67	\$943.97
3rd Quarter 2009	\$810.79	WDA OTY Chg.	\$844.86
4th Quarter 2008	\$908.35	-\$20.89	\$932.81

NAICS Covered Employment Quarterly Data 4th Quarter 2009

SUPER SECTOR	Employment	Change	
		Quarter	Year
Construction	15,602	-175	-5,391
Education & Health Services	21,626	133	840
Federal	2,157	66	51
Financial Activities	5,539	10	-110
Information	1,547	-151	-371
Leisure & Hospitality	14,640	-141	181
Local	18,517	1,581	967
Manufacturing	18,937	-512	-2,892
Natural Resources & Mining	1,453	-23	-266
Nonclassified	32	4	21
Other Services	3,974	-34	-140
Professional & Business Services	12,602	-58	-2,619
State	5,417	162	7
Trade, Transportation & Utilities	30,217	5	-1,136
TOTAL	152,260	867	-10,858

Size Class Employment Composition 4th Quarter 2009



*Counties in WDA: Hardin, Jefferson, & Orange